

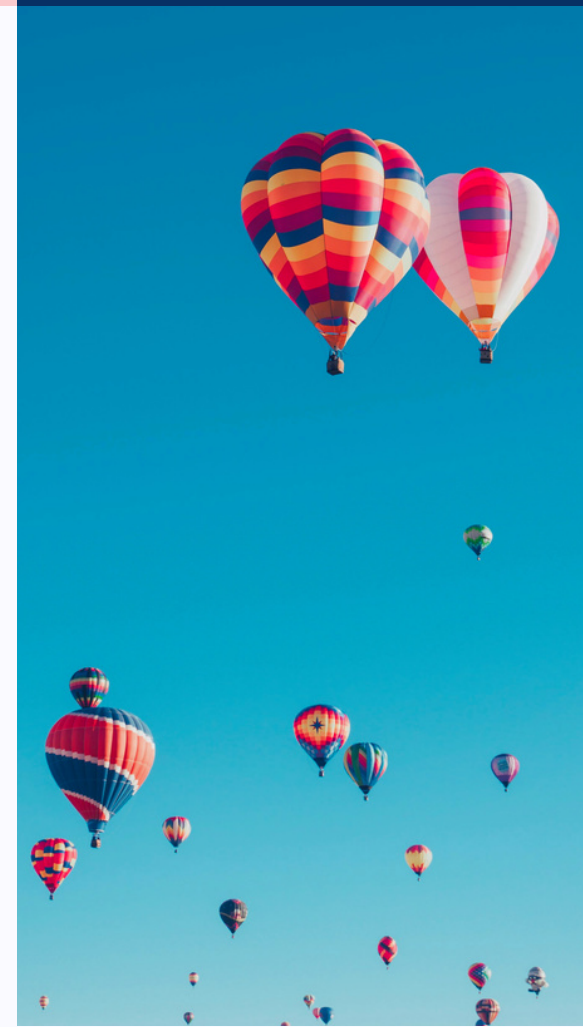
ADD-ONS 2024

DUBLIN

Ready to elevate your
summer camp experience?

BROWSE OUR CATALOGUE FOR

- **ATTRACTIONS**
- **EXCURSIONS**



ADD-ON ATTRACTIONS 2024

DUBLIN



BIRR CASTLE DUBLIN

Birr Castle in Ireland is not just a historic structure; it's an astronomical wonder, boasting the Great Telescope once used to explore the stars. The castle is surrounded by lush gardens and a science centre that celebrates the Earl of Rosse's astronomical achievements. Visitors can enjoy the beauty of the grounds, delve into the family's scientific legacy, and experience one of Ireland's most remarkable historic estates.



BOOK OF KELLS EXPERIENCE DUBLIN

The Book of Kells, housed in the Old Library of Trinity College Dublin, is a breathtakingly illustrated manuscript and one of the most important highlights of medieval art in Europe. Visitors can marvel at the intricate details of this ancient text and then wander the Long Room, one of the world's most beautiful libraries. This attraction is a treasure trove of history and art, perfect for those who appreciate the written word and its preservation.



BOOK OF KELLS EXPERIENCE & TRINITY TRAILS CAMPUS TOUR DUBLIN

Explore the historic Book of Kells and Trinity trails at Dublin's prestigious university. After admiring medieval art, join a guided tour to discover Trinity College's rich history and vibrant student life, providing a profound experience of Ireland's academic heritage and the enchanting atmosphere of one of its oldest universities.



CHRISTCHURCH CATHEDRAL DUBLIN

Christchurch Cathedral stands as a cornerstone of Dublin's rich ecclesiastical history, a majestic structure that has welcomed worshippers for nearly a millennium. Visitors can explore its stunning interior, including the medieval crypt, and learn about the cathedral's fascinating history. Its soaring arches and historic relics make Christchurch Cathedral a must-visit for those interested in Ireland's religious and architectural heritage.



DUBLIN CASTLE DUBLIN

Dublin Castle, with its opulent rooms and historic significance, is a cornerstone of Irish history, having served as the seat of power for centuries. Today, visitors can tour the State Apartments, the Viking Excavation, and the Medieval Undercroft, journeying through the castle's complex political and social history. This attraction offers an insight into the evolution of Dublin from a Viking settlement to a modern capital.



DUBLIN ZOO DUBLIN

Dublin Zoo, one of the oldest and most respected zoos in the world, offers a wildlife haven within the bustling city. With a commitment to conservation and education, visitors can encounter a vast array of animals in habitats that replicate their natural environments. It's a fun and informative day out for all ages, combining the thrill of wildlife with the importance of biodiversity and ecological awareness.



EPIC, THE IRISH EMIGRATION MUSEUM DUBLIN

EPIC The Irish Emigration Museum in Dublin's Docklands is an interactive journey through the global influence of Irish emigration. Visitors can discover the stories of Irish diaspora and the profound impact they've had worldwide, using state-of-the-art technology and immersive exhibits. This museum offers a modern look at the past, celebrating the tenacity and spirit of the Irish people.



GUINNESS STOREHOUSE DUBLIN

The Guinness Storehouse is the ultimate pilgrimage for fans of Ireland's most famous export, offering an immersive journey through the brewing process. As visitors ascend the levels of this iconic building, they'll learn about the history of Guinness before enjoying a pint with panoramic views at the Gravity Bar. It's an attraction that blends cultural history with the enjoyment of Ireland's beloved stout.

ADD-ON ATTRACTIONS 2024

DUBLIN



HARD ROCK CAFÉ DUBLIN

The Hard Rock Café Dublin combines the vibrancy of the music world with the culinary delights of American fare. Memorabilia from rock's greatest legends adorn the walls, providing a backdrop to the dining experience. It's a must-visit for music lovers and those looking for an energetic and fun atmosphere.



IRISH MUSEUM OF MODERN ART DUBLIN

The Irish Museum of Modern Art, located in the historic Royal Hospital Kilmainham, is a prominent cultural hub for contemporary art in Ireland. Through a vibrant array of exhibits and installations, it captivates visitors with works from Irish and international artists. The museum's unique fusion of historic architecture and modern creativity is a must-visit for art enthusiasts exploring Ireland's lively art scene.



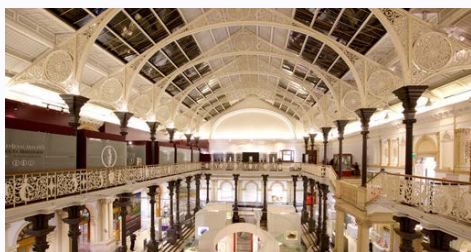
KILMAINHAM GAOL DUBLIN

Kilmainham Gaol offers a profound journey into Ireland's poignant history, having housed some of the most famous political and military leaders in Irish history. The imposing structure and sombre atmosphere provide insight into the harrowing conditions of the 19th and early 20th centuries. Tours of the jail narrate a powerful story of Ireland's struggle for independence, making it a deeply moving experience for visitors.



NATIONAL LEPRECHAUN MUSEUM OF IRELAND DUBLIN

The National Leprechaun Museum in Dublin invites visitors to step into the enchanting world of Irish folklore and mythology. Through captivating storytelling and interactive experiences, guests are transported to a realm where the whimsical and the magical come to life. This museum offers a playful and imaginative look at Irish cultural heritage, making it a delightful excursion for all ages.



NATIONAL MUSEUM OF IRELAND - ARCHAEOLOGY DUBLIN

The National Museum of Ireland - Archaeology is a treasure trove of artifacts, offering a dive into the rich tapestry of Irish history. Highlights include the exquisite Ardagh Chalice, the Tara Brooch, and the ancient bog bodies, preserved for thousands of years. This museum is an essential visit for those eager to uncover the mysteries and artefacts of Ireland's ancient past.



NATIONAL MUSEUM OF IRELAND - DECORATIVE ARTS & HISTORY DUBLIN

The National Museum of Ireland - Decorative Arts & History, located in the historic Collins Barracks, is a celebration of Irish craftsmanship and design. Visitors can explore exceptional exhibits of silverware, furniture, folk life, and military history, including the renowned 1916 Easter Rising exhibition. This museum is a fascinating exploration of the decorative arts that have shaped Irish identity and history.



NATIONAL MUSEUM OF IRELAND - NATURAL HISTORY DUBLIN

Known affectionately as 'The Dead Zoo', the National Museum of Ireland - Natural History is a cabinet of curiosities, home to an impressive collection of specimens from Ireland and around the world. From Irish elk to exotic butterflies, the museum captivates with displays that span four floors of Victorian charm. It's an enchanting time capsule of biodiversity that continues to delight visitors with the wonders of the natural world.



NATIONAL WAX MUSEUM DUBLIN

The National Wax Museum in Dublin offers a fun and interactive experience where visitors can meet life-like figures of famous Irish and international personalities. From historical figures to modern celebrities, the museum blends education and entertainment across a variety of engaging exhibits. This attraction is perfect for those looking to capture memorable photos with wax replicas of their favourite stars and historical icons.

ADD-ON ATTRACTIONS 2024

DUBLIN



MALAHIDE CASTLE GARDENS MALAHIDE

Malahide Castle and Gardens, set against the backdrop of a 12th-century castle, offer visitors a scenic retreat with its ornamental gardens and a butterfly house. The estate's rich history is complemented by its diverse plant species and interactive falconry experiences. A visit to Malahide Castle Gardens is an enchanting escape to one of Ireland's best-preserved castles.



CLIFFS OF MOHER

The Cliffs of Moher, one of Ireland's most spectacular natural attractions, offer breathtaking views of the Atlantic Ocean. These towering cliffs, rising over 700 feet above the sea, provide a dramatic and awe-inspiring landscape. Explore the visitor centre to learn about the cliffs' geology and wildlife, including the numerous seabirds that inhabit the area. Walk along the cliff tops for panoramic vistas and photo opportunities. This visit to the Cliffs of Moher is an unforgettable experience of Ireland's natural beauty and power.



CLIFFS OF MOHER CO. CLARE

The Cliffs of Moher, one of Ireland's most spectacular natural wonders, rise dramatically from the Atlantic Ocean to a height of over 700 feet. This breathtaking coastal walk offers panoramic views of the sea, the Aran Islands, and the rugged coastline. A visit here is a mesmerising experience, blending the raw power of nature with serene beauty, making it a must-see for nature enthusiasts.



POWERSCOURT GARDENS ENNISKERRY

Powerscourt Gardens in County Wicklow, Ireland, are a sublime blend of formal gardens, sweeping terraces, and ornate statues, set against the backdrop of the Wicklow Mountains. These stunningly landscaped gardens, spanning over 47 acres, feature a variety of themes including a Japanese garden and a pet cemetery. Powerscourt is a horticultural masterpiece, perfect for those who appreciate the artistry of garden design.



KILKENNY CASTLE KILKENNY

Kilkenny Castle, a majestic and historic fortress, stands proudly on the banks of the River Nore in Ireland's medieval city of Kilkenny. This grand castle, with a history spanning over 800 years, offers visitors a chance to explore its lavishly restored rooms and extensive art collection. The castle's picturesque gardens and parklands, alongside its intriguing mix of architectural styles, make it a captivating destination for those fascinated by history, art, and the allure of ancient Ireland.

ADD-ON EXCURSIONS 2024

DUBLIN



BIRR WITH ENTRY TO BIRR CASTLE

Discover the charming town of Birr and its remarkable castle, renowned for its scientific heritage and beautiful gardens. Explore the Birr Castle Estate, home to the historic Great Telescope and an array of scientific exhibits. Stroll through the award-winning gardens, featuring rare plants and a serene lake. This trip is a wonderful blend of history, science, and natural beauty, making it a unique and educational experience.

Note: the castle itself is not open to the public.



HOWTH & MALAHIDE WITH ENTRY TO MALAHIDE CASTLE AND GARDENS

Explore Howth, a bustling fishing village near Dublin, known for its scenic beauty and maritime charm. Continue to Malahide, home to the historic Malahide Castle and its stunning gardens. Tour the castle, which dates back to the 12th century, and explore its mix of medieval and modern history. Wander through the beautiful gardens, featuring a variety of plant species and a butterfly house. This excursion combines the coastal allure of Howth with the historical elegance of Malahide Castle, ideal for those interested in Ireland's history and natural beauty.



CLIFFS OF MOHER

The Cliffs of Moher, one of Ireland's most spectacular natural attractions, offer breathtaking views of the Atlantic Ocean. These towering cliffs, rising over 700 feet above the sea, provide a dramatic and awe-inspiring landscape. Explore the visitor centre to learn about the cliffs' geology and wildlife, including the numerous seabirds that inhabit the area. Walk along the cliff tops for panoramic vistas and photo opportunities. This visit to the Cliffs of Moher is an unforgettable experience of Ireland's natural beauty and power.



KILKENNY WITH ENTRY TO KILKENNY CASTLE

Kilkenny, known as Ireland's medieval capital, offers a rich blend of historic architecture and vibrant culture. Visit Kilkenny Castle, a symbol of Norman occupation, and explore its grand chambers and lush gardens. Discover the castle's art gallery, and learn about its storied history spanning over 800 years. Wander through Kilkenny's winding streets, dotted with ancient churches and artisan shops. This excursion is perfect for those seeking a taste of medieval Ireland and its enduring legacy.



GALWAY

Galway, a harbour city on Ireland's west coast, is a hub of Irish culture and heritage. Known for its vibrant lifestyle and numerous festivals, Galway is a blend of traditional Irish culture and modern vibrancy. Stroll through its cobbled streets, enjoy live Irish folk music, and explore the colourful shops and cafés. Visit landmarks such as the Spanish Arch and Galway Cathedral, each telling a part of the city's rich history. This excursion is perfect for experiencing the lively spirit and charm of one of Ireland's most beloved cities.



POWERSCOURT GARDENS & BRAY

Visit Powerscourt Gardens in County Wicklow, known for their exquisite beauty and sprawling landscapes. Explore the Italian and Japanese gardens, the pet cemetery, and the Pepperpot Tower. Then, head to Bray, a charming coastal town, for a stroll along the seafront and enjoy its traditional seaside atmosphere. This trip combines the elegance of one of Ireland's most famous gardens with the charm of a coastal town. It's perfect for those who appreciate natural beauty and a relaxed seaside vibe.