

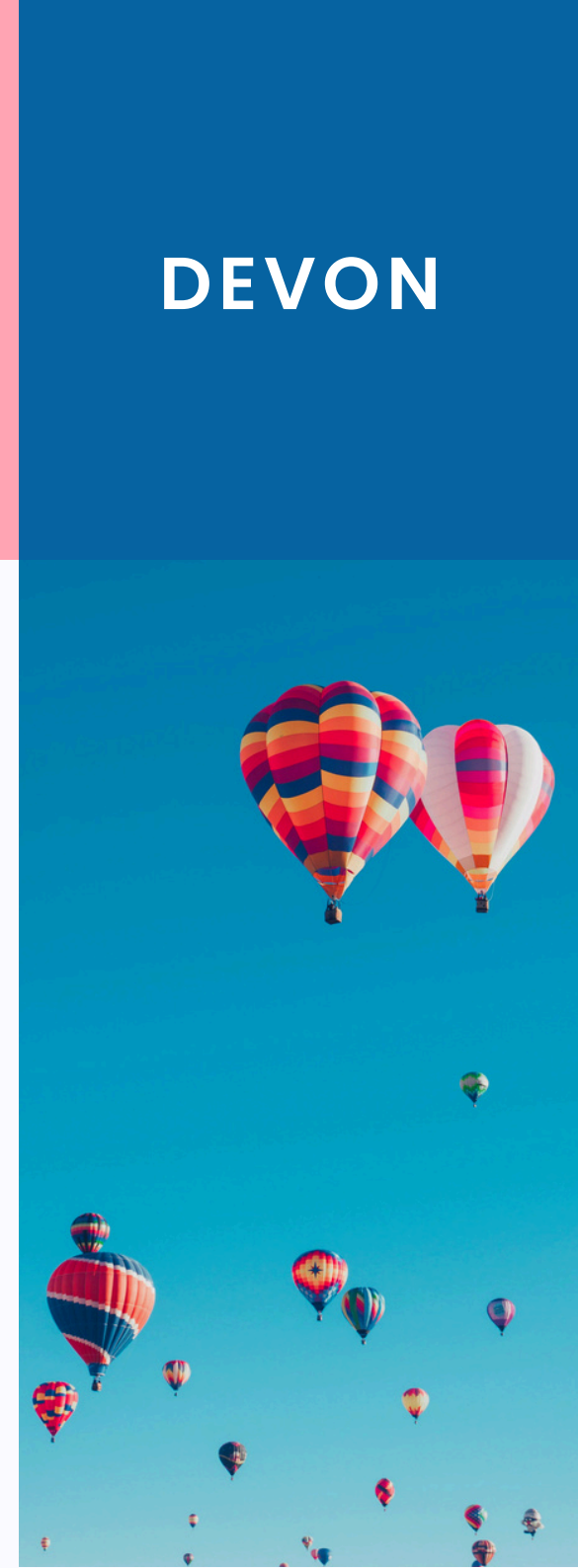
ADD-ONS 2025

DEVON

Ready to elevate your
integration experience?

BROWSE OUR CATALOGUE FOR

- **ATTRACTIONS**
- **EXCURSIONS**



ADD-ON ATTRACTIONS

DEVON



ST MICHAEL'S MOUNT CORNWALL

St Michael's Mount is a tidal island steeped in legend and history, located off the coast of Cornwall. Explore the medieval castle, beautiful gardens, and learn about its centuries-old connections to monks, sailors, and kings. Accessible by foot during low tide or by boat, this enchanting destination offers stunning views and a magical atmosphere.



THE EDEN PROJECT CORNWALL

The Eden Project is a world-famous eco-attraction featuring massive biomes that house rainforest and Mediterranean ecosystems. Discover exotic plants, interactive exhibits, and educational displays about sustainability and biodiversity. It's an inspiring and unique experience, perfect for nature lovers and curious minds.



THE LOST GARDENS OF HELIGAN CORNWALL

The Lost Gardens of Heligan are one of Britain's most beautiful and mysterious gardens, rediscovered after being abandoned for decades. Wander through lush landscapes, from jungle-like greenery to romantic flower gardens. Full of history and natural wonder, Heligan is a magical escape for all visitors.



THE MINACK THEATRE CORNWALL

Perched on a cliff overlooking the Atlantic Ocean, the Minack Theatre is one of the world's most breathtaking open-air venues. Visitors can attend a performance or simply explore the theatre's terraces and enjoy panoramic sea views. This iconic spot combines dramatic artistry with the beauty of Cornwall's coastline.



TINTAGEL CASTLE CORNWALL

Tintagel Castle is a place of legend, believed to be the birthplace of King Arthur. Explore the medieval ruins, cross the stunning footbridge, and admire the rugged beauty of Cornwall's coastline. This atmospheric site offers a fascinating mix of history, myth, and dramatic landscapes.



EXETER CATHEDRAL EXETER

Exeter Cathedral is a masterpiece of Gothic architecture and one of England's most historic churches. Admire its intricate stonework, beautiful stained glass, and the longest vaulted ceiling in Europe. A visit here is both awe-inspiring and a journey into over 900 years of history.

ADD-ON EXCURSIONS

DEVON



EXETER & DEVON COAST BRANSCOMBE AND BEER BEACH

Explore the charming Devon coastline with a visit to the picturesque village of Branscombe and its scenic beach. Continue to Beer Beach, known for its dramatic cliffs and traditional fishing boats. This trip offers a peaceful escape, combining natural beauty with the charm of Devon's coastal villages.



OTHER DESTINATION

Have a specific destination in mind?

Let us know your preferences, and we'll help you explore options for a full-day trip. Whether it's history, nature, or adventure, the possibilities are endless.



CORNWALL NORTH COAST NEWQUAY, PADSTOW, & CARNEWAS AT BEDRUTHAN

Discover Cornwall's stunning north coast with visits to Newquay, famous for its surfing beaches, and Padstow, a quaint fishing village with excellent seafood. Admire the dramatic rock formations at Carnewas at Bedruthan, a highlight of the Jurassic Coast. This day trip is perfect for coastal exploration and breathtaking views.



CORNWALL WEST COAST LAND'S END, ST IVES, & ST MICHAEL'S MOUNT + ENTRY TICKETS TO CASTLE

Experience Cornwall's dramatic west coast, starting at Land's End, the UK's most westerly point, and continuing to the artistic haven of St Ives. Explore St Michael's Mount, a tidal island with a medieval castle and stunning gardens. This trip offers a blend of history, natural beauty, and iconic coastal landmarks.